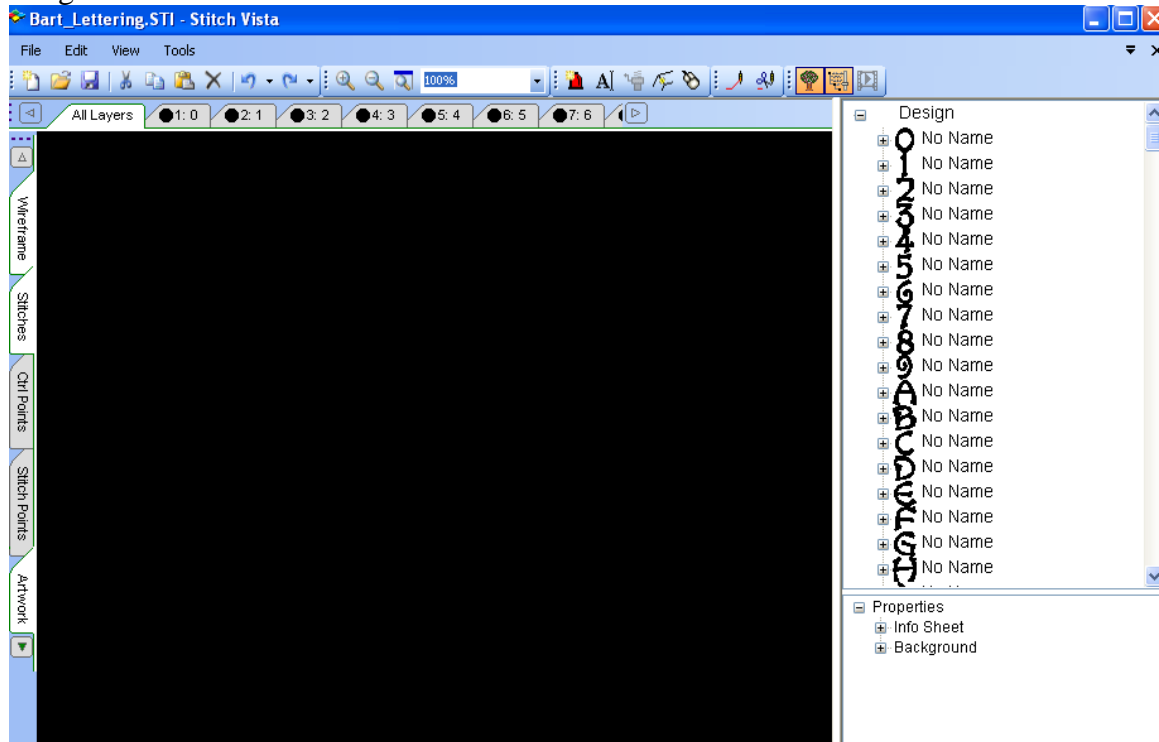


Procedures to convert Stitch Pro sti lettering into Stitch Vista sti Lettering

1. Click on Open in Stitch Vista.
2. Click on “C” drive
3. Click on Program Files
4. Click on Stitch Pro
5. Click on Fonts
6. Select the fonts (you would like to convert/save to Stitch Vista)
7. You will see the below: (Image: Fonts #01)

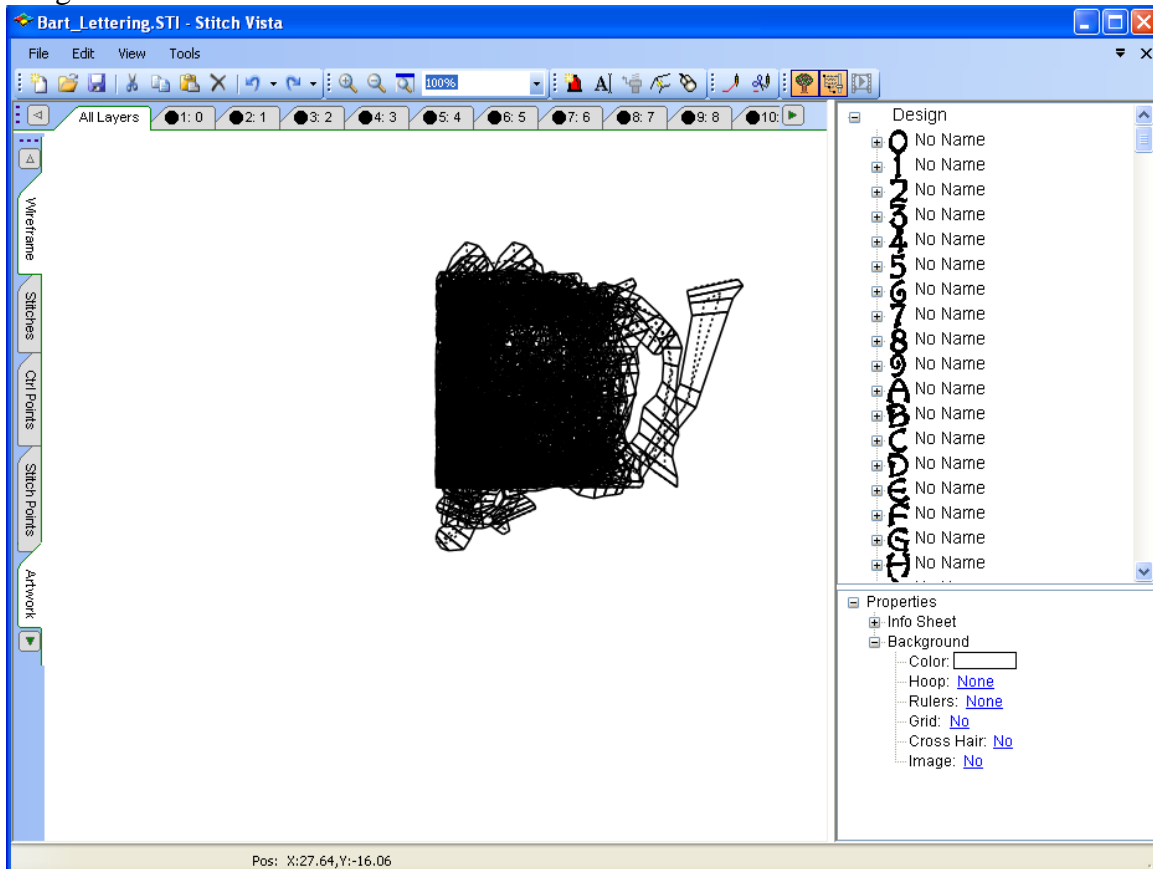
Image: Fonts #01



To change the background color, slick on Background and select the background color you need. You may select white.

The image you see are all the letters overlapping on each other. (Image:Fonts #02) This is a natural default for the auto lettering sti file.

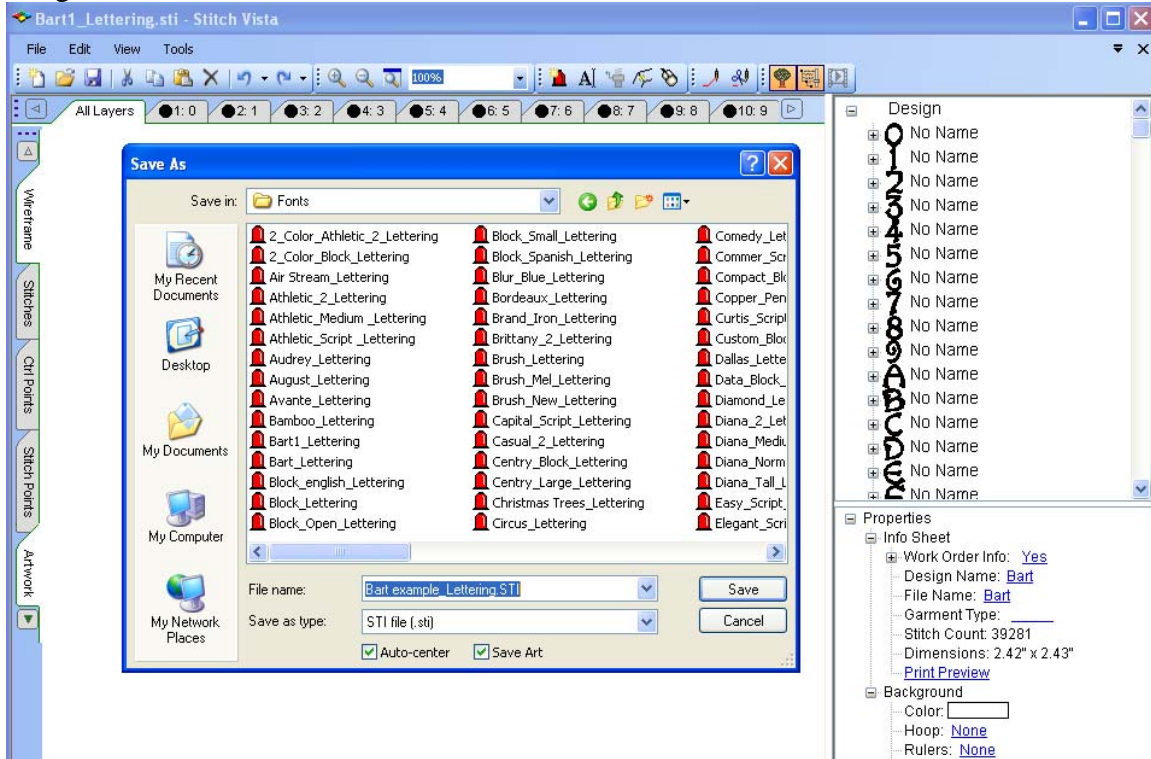
Image: Fonts #02



8. Click on Info Sheet..
9. Keying the Design Name : Bart (example) and file name: Bart (example)
10. When the Design name and font name is added, click on “Save as”.

11. Click on “C” drive
12. Click on Program Files
13. Click on Stitch Vista
14. Click on Fonts, type the file name
15. Then click on save (Image: Fonts #03)

Image: Fonts #03



Remarks: Now the Stitch Pro sti font you have selected is saved in c:/Program files/Stitch Vista/fonts

Reminder: You must close Stitch Vista software and re open again for the newly selected fonts to be activated.